
SOLUTIONS FOR SUSTAINABLE SUPERYACHTS



*Sustainability is no longer about doing less harm.
It's about doing more good.*



Group of Companies

Complete Solutions



About EPE

Environmental Protection Engineering (EPE) S.A. is a global environmental company that provides a wide range of products and services including: Emergency oil & chemical spill response, marine and industrial spill response, management of hazardous and non-hazardous waste, environmental rehabilitation and protection services, consulting services and training services. By continuously investing in research, development and implementation of innovative technologies, Environmental Protection Engineering S.A. (EPE) is now considered to be the largest Environmental Services Provider Company in the Eastern Mediterranean.

About RWO

For over 45 years, RWO has been supplying future-proof solutions for marine water treatment - made in Germany. The product portfolio includes equipment for the treatment of drinking and process water as well as systems for pollution prevention such as oily water separators or sewage treatment plants. Today RWO is recognized as a technological leader in the field of oil/water-separation with over 16.000 units delivered worldwide. More than 40 sales and service stations ensure short communication links and local availability of trained service engineers.

About ERMA FIRST

Founded in 2009 and headquartered in Greece, ERMA FIRST is a leading manufacturer and provider of future-proof sustainable maritime solutions. The company's robust systems and solutions ensure worldwide compliance, provide operational simplicity and reduce operational expenditure, while at the same time minimising the impact of ship operations on the environment.

ERMA FIRST's customer-centric approach offers flexible and convenient servicing through a trusted network of certified engineers worldwide. ERMA FIRST provides sales, maintenance and training to clients via offices in 46 countries.

ERMA FIRST offers a complete range of ballast water treatment solutions (BWTS), holding USCG and IMO Type Approvals. The ERMA FIRST FIT BWTS also holds South Korean Flag Type Approval.

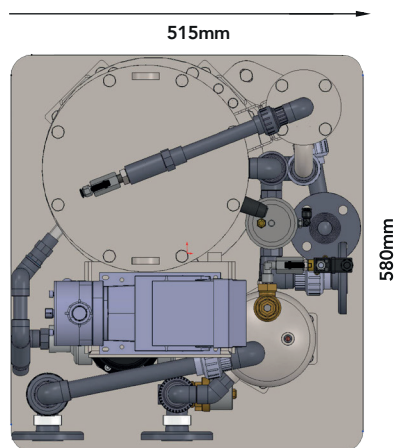
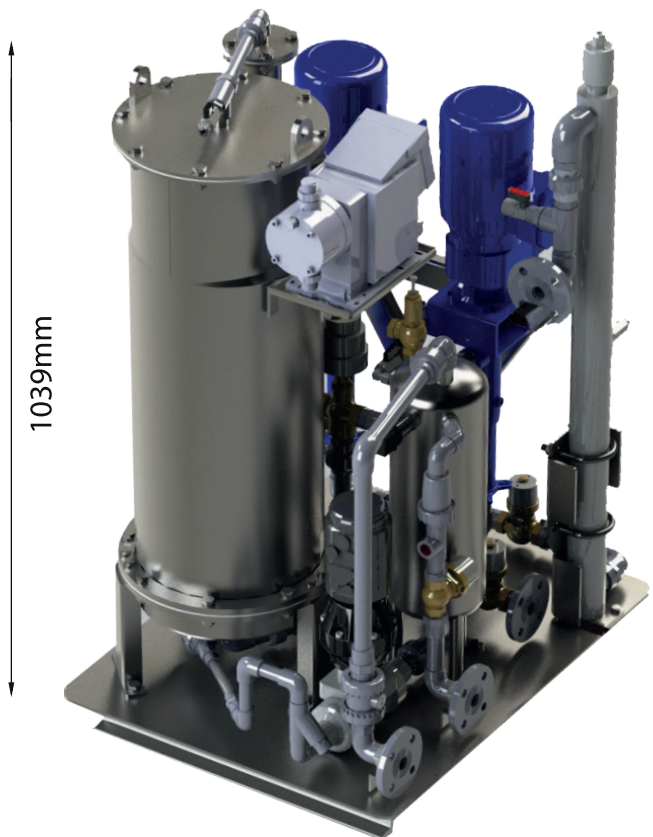
ERMA FIRST won the Lloyd's List Technical Achievement Award (2013 and 2023), the GREEN4SEA Technology Award (2016) and the GREEN4SEA Sustainability Award (2023).

TRITON FIT

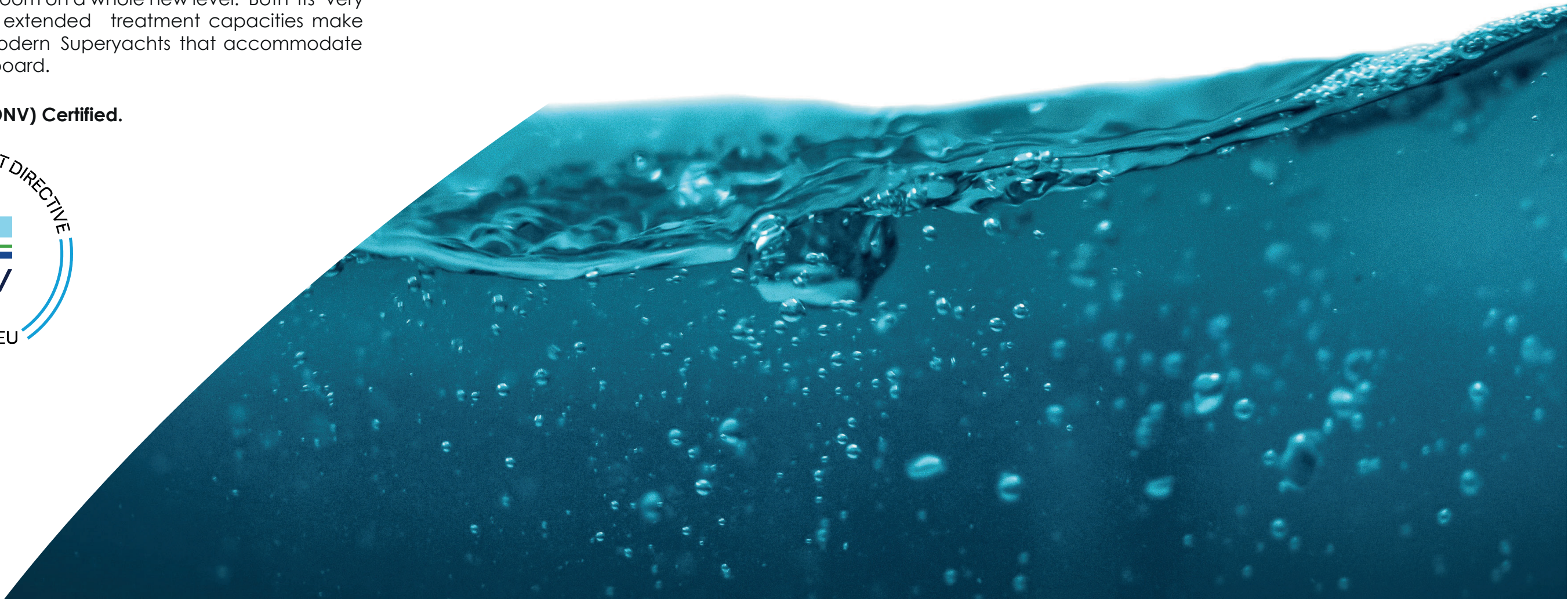
Superyacht Sewage Treatment

TRITON FIT is a physiochemical sewage treatment plant that fully complies with the requirements of IMO/MEPC.227(64). The accessibility from one side allows yacht designers to plan space in the engine room on a whole new level. Both its very compact size and extended treatment capacities make TRITON FIT ideal for modern Superyachts that accommodate up to 30 people on board.

Det Norske Veritas (DNV) Certified.



COMPACT DESIGN

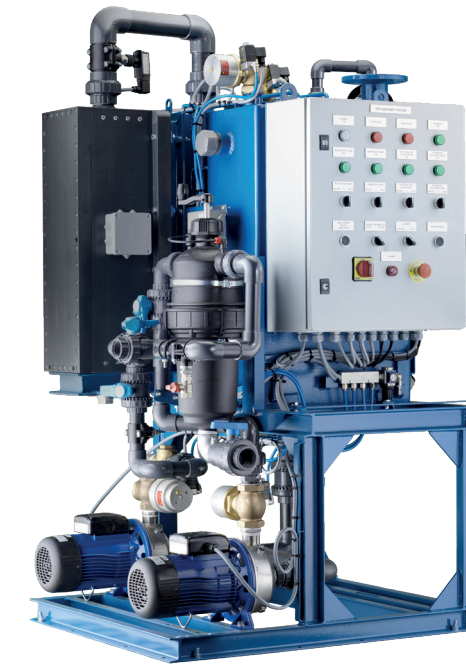


SUPREME QUALITY

TRITON EC

Marine Sewage Treatment

TRITON EC is a purely electrochemical wastewater treatment plant. It is a completely chemical-free system meeting the requirements of IMO/ME-PC.227(64). TRITON EC is designed for waste water treatment on board merchant ships, Navy vessels, yachts, ferries, small cruisers, offshore platforms and other marine type applications.





POSEIDON FIT & OWS-COM

Oily Water Separators

POSEIDON FIT is a versatile 5/15ppm OWS, supplied with a loose pump that can be installed in various locations and has the capability for bilge transfer. It consists of two stages; the coalescer and the emulsion breaking unit. The coalescer, equipped with a self-cleaning filter, works on a continuous mode, by-passing the second stage and thus prolonging the lifetime of the filters. If the Oil Content Monitor measures an effluent with oil content of more than 4/14ppm at the 1st stage outlet, then the emulsion breaking unit begins its operation.



More than 16000 ships have already been equipped with RWO's oily water separators since RWO started its business in 1975. The OWS-COM system uses a combination of highly effective open porous coalescer with automatic backflushing, together with a second stage emulsion breaking oil and hydrocarbon polisher. The periodical backflushing keeps the coalescer surface clean and offers long lasting operation according to IMO MEPC.107(49). The OWS-COM is part of RWO's leading Total Water Management offer.



*Available in all sizes and forms.

oneTANK BWTS

Ballast Water Treatment System

SMALLEST FOOTPRINT

oneTANK BWTS is a simple, low-cost ballast water treatment option intended for yachts that do not need the typical complex, high capacity solutions. Its small size and minimal connections offer reliable results, and a fast and easy shipyard experience. The “do it yourself” model allows operators to install and commission their own systems. We provide the applications engineering and include remote support.



USCG & BWMS
Code Approved



Fresh Water Solutions

Treatment Systems

Sustainability on board also means the elimination of plastic bottles. With the Fresh Water Solutions that EPE Yachting offers, yachts can now independently produce fresh mineral water. Our systems ensure the highest quality water possible, free from any harmful bacteria. You can now get rid of all plastic water containers and enjoy tasteful fresh water at any time.

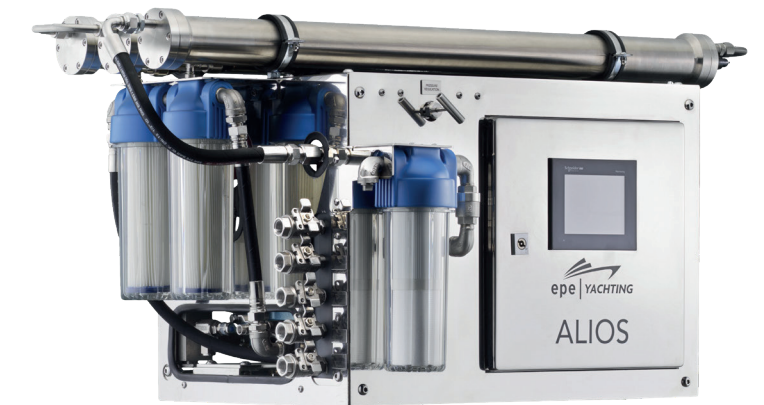
PURE WATER

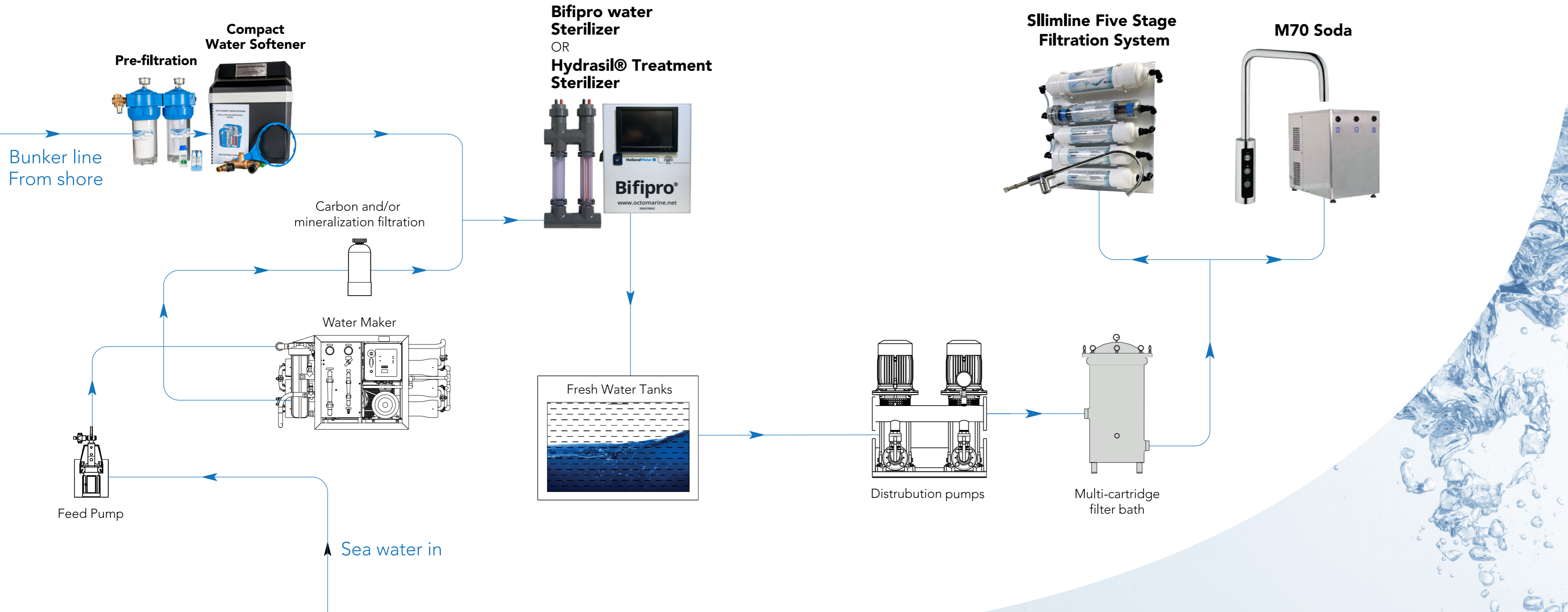


ALIOS

Reverse Osmosis Desalination

ALIOS is a reverse osmosis system, able to produce reliable fresh water from the desalination of sea water. ALIOS is designed for all sizes of modern Superyachts, while maintaining a very compact size, making it ideal for both retrofits and newbuilds. It is manufactured with top quality materials that ensure maximum efficiency through its life. The automated backflushing with fresh water prolongs the life of the membranes and makes certain that the produced fresh water will be rid of unwanted substances.





CLEANER SKIES

HERMES

Black Smoke & Odor Eliminator

EGT Series Systems offer reliable reduction of harmful emissions of diesel generators and main engines under all circumstances. The diesel particle filters (DPF) of the EGT Series collect the black smoke and the harmful particulate matter from the exhaust gases. Regeneration of the filters happens passively and actively, according to the operation profile of each yacht.



Tech Specifications

Complete Solutions

TRITON RANGE

Model	Capacity [m³/d]	People on Board (POB)	Skid Footprint			Footprint with loose pumps		
			Length [mm]	Width [mm]	Height [mm]	Length [mm]	Width [mm]	Height [mm]
TRITON FIT 3	3.0	12-15	730	580	1039	580	515	1039
TRITON FIT 6	6.0	24-30	855	690	1039	690	720	1039
TRITON EC 100	10.0	40-50	1200	1600	1900	*Available upon request		
TRITON EC 200	20.0	80-100	2000	1600	1900			
TRITON EC 300	30.0	120-150	3000	1600	1900			



POSEIDON FIT

Model	Capacity m³/h	Length mm	Width mm	Height mm	Power kW	Empty Weight kg
0.25	2.25	830	510	868	0.53	157
0.5	0.5	830	510	868	0.53	157
1.0	1.0	1100	800	1210	0.91	360
2.0	2.0	1450	860	1675	4.26	720



OWS-COM

Model	Capacity m³/h	Length mm	Width mm	Height mm	Power kW	Empty Weight kg
0.1	0.1	715	650	1100	0.8	125
0.25	0.25	960	750	1005	2.6	180
0.5	0.5	960	750	1050	3.2	195
1.0	1.0	1170	800	1220	3.2	270
2.5	2.5	1510	1060	1485	3.7	457



oneTANK BWTS

Operational Limitations:

Salinity: Not Applicable
 Water Temperature: Not Applicable
 Hold Time: >24 Hours
 Min. Average Total Residual Oxidant (TRO): 5 mg/L
 Min. Concentration-Time (CT): 120 mg-hr/L

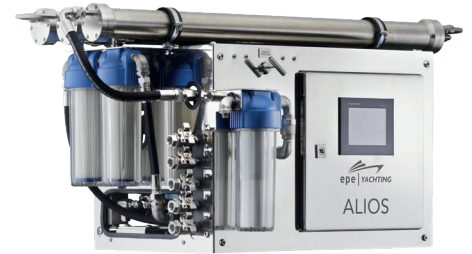
Particulars

604mm x 559mm x 1,651mm, 216 kg
 15 Amp 120 Volts, or 7.5 Amp 230 Volts
 Fully automated controls to vessel alarm
 and monitoring system



ALIOS

Model	Capacity [ltrs/h]	Capacity [m ³ /d]	Length [mm]	Length [mm] Membranes included	Width [mm]	Height [mm]
RO 3.0	140	3.4	850	1335	650	750
RO 4.0	180	4.3	850	1335	650	750
RO 4.0 Duplex	360	8.6	850	1335	650	1500
RO 5.0	200	4.8	850	1335	650	750
RO 10.0	425	10.2	1100	1600	800	850
RO 15.0	625	15.0	1100	1600	800	850
Models > 15.0 m³/d			Upon Request			



HERMES

Model	Filter	DPF Volume	For Genset of	Length mm	Width mm	Height mm	Weight mm
EGT4-10	1	20L	100-250 kW	950	Ø500		75
EGT4-20	2	40L	200-350 kW	1170	675	585	265
EGT4-30	3	60L	300-450 kW	1730	675	585	390
EGT4-40	4	80L	400-600 kW	1170	675	1170	450



PM (measured as PM10)	>97% reduction
Sound Attenuation	Std. Engine Muffle / Additional Sound Insulation on request

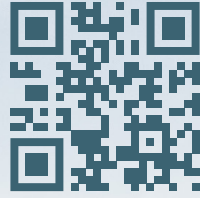
Services

Premium Quality Professional Services

- Quality Water Testing
- Chemical Disinfection & Biofilm Treatment
- Grey & Black Water Drainage System Cleaning
- Integrated Fuel Treatment
- HVAC Duct System Cleaning
- Exhaust Gas System Cleaning
- Galley/Hoods System Cleaning
- Vacuum Sewage System Cleaning
- Scupper Drainage System Cleaning
- Sea Water Cooling System Cleaning
- Grease Traps and Macerator System Cleaning

True Global Network
of Service & Spare parts





www.epeyachting.com

